



CF 碳膜固定電阻器 CARBON FILM FIXED RESISTORS

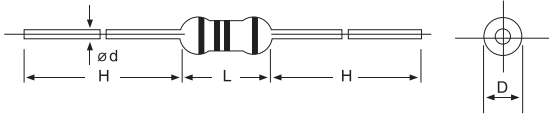
碳膜固定電阻器(CF)

■ 訂貨方式 HOW TO ORDER

CF	1/4W	P	4K7	J
a	b	c	d	e

a: 名稱	Product code
b: 額定電力	Rated power of element
c: 形式	Type
d: 電阻值	Resistance value
e: 容許誤差	Tolerance(J: ±5%)

■ 尺寸 DIMENSION



■ 特點

1. 高含鋁量瓷棒使用中溫度係數變化小阻值穩定。
2. 導綫焊錫性良好。
3. 適用自動化插件。

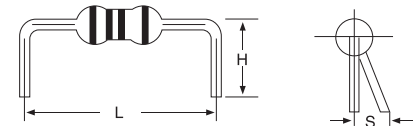
■ P-TYPE

Type	L ± 0.5	D ± 0.5	H ± 2	∅d ± 0.05	Resistance Range	Tolerance
1/8 W, 1/4 WS	3.5	1.7	27	0.43	1Ω~5.1MΩ	± 2%, ± 5%
1/4 W, 1/2 WS	6.0	2.4	26	0.48	1Ω~10MΩ	
1/2 W, 1 WS	9.0	3.3	25	0.55	1Ω~10MΩ	
1 W, 2 WS	11	4.5	34	0.68	1Ω~10MΩ	
2 W, 3 WS	15	5	33	0.75	1Ω~10MΩ	
3 W, 5 WS	17	6.0	32	0.75	1Ω~10MΩ	
5 W	24.5	8	38	0.75	1Ω~10MΩ	

■ M-TYPE

unit: mm

Type	L ± 0.5	H ± 1	S (MAX)
1/8 W, 1/4 WS	5 ~ 7.5	4 ~ 10	1.5
1/4 W, 1/2 WS	10 ~ 12.5	4 ~ 10	1.7
1/2 W, 1 WS	12.5 ~ 15	4 ~ 10	1.7

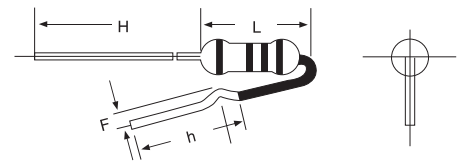


* IT CAN BE MANUFACTURED ACCORDING TO THE DIMENSION THAT REQUIRED BY CUSTOMERS.(可依客戶所需尺寸加工制造)

■ F-TYPE

unit: mm

Type	L ± 0.5	H ± 1	F ± 0.5	h ± 1
1/8 W, 1/4 WS	5.0	27	1.8	13.3
1/4 W, 1/2 WS	9.2	26	1.8	13.3
1/2 W, 1 WS	11	25	1.8	13



* "H" PART CAN BE CUT, BUT CAN'T BE SMALLER THAN 4 mm
("H"部分可剪, 但長度不得小於 4mm)

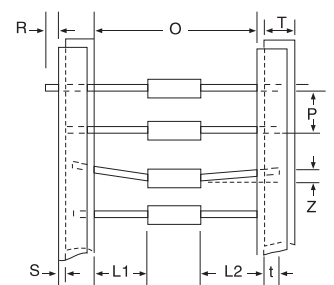
■ T-TYPE

DIMENSION

unit: mm

Style	Type	O	P	L1-L2	T	Z	R	t	S
T-52	1/8 W, 1/4 WS	52 ± 1	5 ± 0.2	1 max.	6 ± 1	1 max.	0	4 min.	0.5 max.
	1/4 W, 1/2 WS	52 ± 1	5 ± 0.2	1 max.	6 ± 1	1 max.	0	4 min.	0.5 max.
	1/2 W, 1 WS	52 ± 1	5 ± 0.2	1 max.	6 ± 1	1 max.	0	4 min.	0.5 max.
T-26	1/8 W, 1/4 WS	26 ^{+1.5} ₋₀	5 ± 0.5	1 max.	6 ± 1	1 max.	0	3.2 min.	0.8 max.
	1/4 W, 1/2 WS	26 ^{+1.5} ₋₀	5 ± 0.5	1 max.	6 ± 1	1 max.	0	3.2 min.	0.8 max.

Taping Dimension

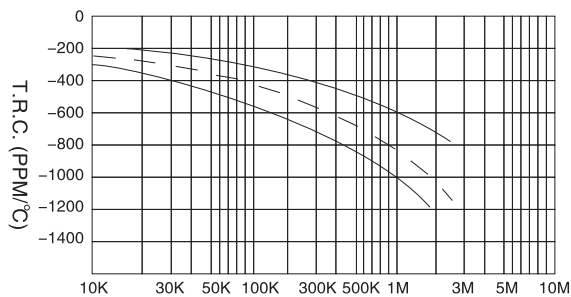




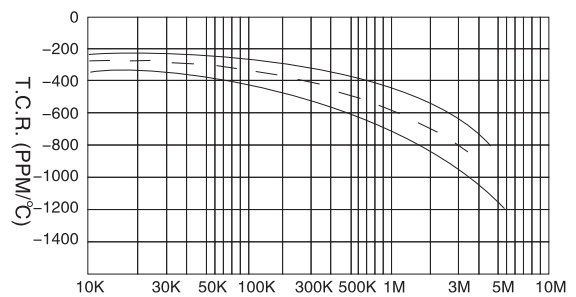
■ 電氣特性 CHARACTERISTICS

項目 Requirements		特性 Characteristics			試驗基準 Test Method
額定電功率	Power Rating	1/8 W, 1/4 W	1/2W,1W	2W,3W	
使用溫度範圍	Operating Temp Range	-55°C ~ +125°C			
最高使用電壓	Max Continuous Working Voltage	200 V, 250 V	350 V	500 V	
最高過負荷電壓	Max Over Load Voltage	400 V, 500 V	700 V	1000 V	
耐絕緣電壓	Insulation Resistance Voltage	300 V, 350 V	500 V	700 V	MIL-R-22684 B-4.6.7 JIS. C. 5202.5.7
最大容許變化率 (%) Max Tolerance Changes	短時間過負荷	Short Time Overload	± (0.75%+0.05Ω)		MIL-R-22684 B-4.6.5 JIS. C. 5202.5.5
	浸錫試驗	Effect of Soldering	± (0.75%+0.05Ω)		MIL-R-22684 B-4.6.9 JIS. C. 5202.6.4
	溫度循環	Temp Cycling	± (0.75%+0.05Ω)		MIL-R-22684 B-4.6.3 JIS. C. 5202.7.4
	耐濕負荷壽命	Moisture Resistance	± (3%+0.05Ω)		MIL-R-22684 B-4.6.10 JIS. C. 5202.7.9.1000 H
	耐震性	Vibration	± (0.5%+0.05Ω)		MIL-R-22684 B-4.6.14 JIS. C. 5202.6.3.3. A
	負荷壽命	Load Life	± (3%+0.05Ω)		MIL-R-22684 B-4.6.12 JIS. C. 5202.7.10.1000 H
溫度係數	Temperature Coefficient (PPM/°C)	300 KΩ 以下	+350~-500 PPM/°C		MIL-R-22684 B-4.6.11 JIS. C. 5202.5.2
		300 KΩ ~1 MΩ	-800 PPM/°C		
		1 MΩ ~10 MΩ	-1500 PPM/°C		

■ 溫度係數 TEMPERATURE COEFFICIENT

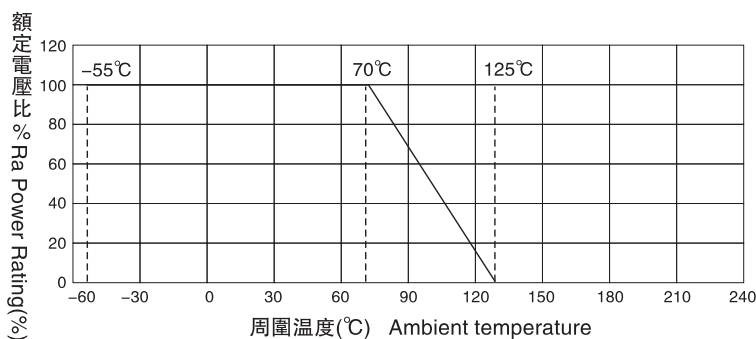


Resistance Range (Ω)
Suitable for Use 1/8W, 1/4W
抵抗値 (Ω)
適用於 1/8W, 1/4W



Resistance Range (Ω)
Suitable for Use 1/2W, 1W, 2W, 3W
抵抗値 (Ω)
適用於 1/2W, 1W, 2W, 3W

■ 定格電力減曲線 RATING AMBIENT TEMP



■ 雜音曲線 CURRENT NOISE LEVELS

