



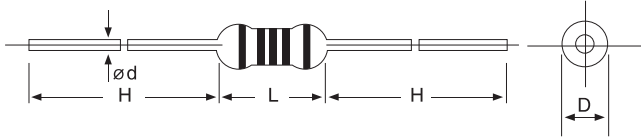
玻璃釉膜固定電阻(MG)

■ 訂貨方式 HOW TO ORDER

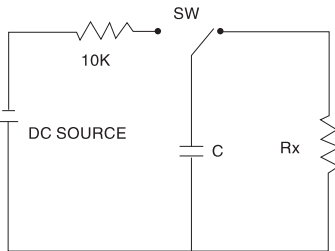
MG	1/4W	P	10K	J
a	b	c	d	e

a: 名稱	Product code
b: 額定電力	Rated power of element
c: 形式	Type
d: 電阻值	Resistance value
e: 容許誤差	Tolerance(J: ±5%)

■ 尺寸 DIMENSION



■ 承受浪涌電壓 Surge Withstanding Voltage

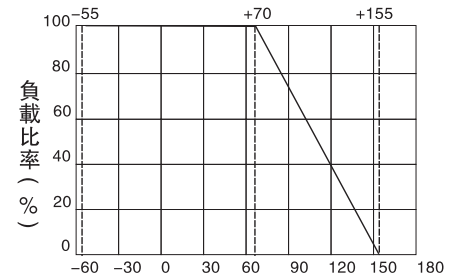


- 正常尺寸: 上圖中充放電回路: 2.5秒"通", 2.5秒"斷", 50次循環, 電容容值C=0.001uf
Normal Size: the discharge cycle is repeated in above circuit: 2.5 seconds"ON", 2.5 seconds"OFF", 50 cycles, C=0.001 uf.
- 小型化產品: 上圖中充放電回路: 2.5秒"通", 2.5秒"斷", 10次循環, 電容容值C=0.01uf
Small Size: the discharge cycle is repeated in above circuit: 2.5 seconds"ON", 2.5 seconds"OFF", 10 cycles, C=0.01 uf.
- 電路中的直流電壓如下表"承受浪涌電壓"所述
The applied DC source voltage is shown as below table.

■ 特性 FEATURE

1. 耐高壓, 穩定性強, 抗濕熱高溫環境
Provide high stable performance against environment conditions & overload voltage
2. 可承受高浪涌電壓
Can withstand High Surge Voltage
3. 阻值範圍寬, 溫度係數低
Width resistance range & low TCR

■ 功率衰減曲線



■ RATING DIMENSIONS

型號 Type	阻值範圍 Resistance Range	最高使用電壓 Max Working Voltage		最高使用電壓 Max Overload Voltage		耐電壓 Dielectric Withstanding Voltage	尺寸 Dielectric(mm)			
		普通型	高壓型	普通型	高壓型		L ± 0.5	∅d ± 0.5	H ± 2	∅d ± 0.05
1/4W, 1/2WS	100K~100 M	500 V	1600 V	700 V	2000 V	500 V	6	2.4	28	0.48
1/2W, 1WS	100K~100 M	700 V	3500 V	1000 V	4000 V	700 V	9	3.3	30	0.55
1W, 2WS	100K~100 M	1000 V	3500 V	1400 V	4000 V	700 V	9	3.3	30	0.68
2W, 3WS	100K~100 M	1000 V	3500 V	1400 V	4000 V	700 V	16	5.5	33	0.75

■ 性能 CHARACTERISTICS

項目 Item	規格 Spec.	備註 Remarks
高溫負荷壽命 Load life under high temperature	± 1.5%	JIS-C-5202 7.10 額定電壓 70°C 1000小時 Rated voltage at 70°C for 1000 hours
耐濕負荷壽命 Load life under high humidity	± 5%	JIS-C-5202 7.9 額定電壓 40°C, 95%RH 1000小時 Rated voltage at 40°C, 95% RH for 1000 hours
溫度係數 Temp. coeff.of resistance	± 200 ppm/°C	JIS-C-5202 5.2 室溫+100°C Room temp.+100°C
短時間過負荷 Short time overload	± 0.5%	JIS-C-5202 5.5 6.25 倍額定功率5秒 6.25 times the rated power for 5 seconds
溫度循環 Temperature cycling	± 1%	JIS-C-5202 7.4 5 次-55~+155°C 5 cycles for -55~+155°C
焊錫耐熱 Immersion in solder	± 1%	JIS-C-5202 6.4 350°C 3秒 350°C for 3 seconds
絕緣電阻 Insulation resistance	> 1000 MΩ	JIS-C-5202 5.6 100V 絕緣測試器 100 volt megger
脈衝過負荷 Pulse overload	≤ ± 2%	如上圖 "承受浪涌電壓"